

IN THIS EDITION:

- ★ **New Benefits Assistance Program | Pg 1**
- ★ **Introducing Our Benefits Navigators | Pg 2**
- ★ **Dedicated Family Caregivers | Pg 3**
- ★ **PCM Client Story: Bernie | Pg 4**
- ★ **CWP Outreach Spotlight: Sharon | Pg 5**
- ★ **PCM Clinical Spotlight: Destiny | Pg 5**
- ★ **CWP Events: Join us! | Pg 6**
- ★ **PCM Impairments Corner | Pg 7**



Edition 60 | Volume 17 | 2026

Cold War Patriots is a division of Professional Case Management and not affiliated with the U.S. Department of Labor.



**Recent changes to the U.S. DOL procedure manuals,
potential new SECs and laws are being discussed that
could affect your benefits. Call us today to learn if your
benefits could be impacted by these updates!**

BENEFITS ASSISTANCE IN 4 SIMPLE STEPS

 **Step 1: Determining Your Eligibility**

 **Step 2: Filing Your Claim**

 **Step 3: Accessing Your Benefits**

 **Step 4: Maximizing Your Support**

New Benefits Assistance Program Provides Expert Guidance and Support

The process of applying for benefits under the Energy Employees Occupational Illness Compensation Program Act (EEOICPA) can be complex, but Cold War Patriots (CWP) and Professional Case Management (PCM) are here to guide you every step of the way.

Our new Benefits Assistance Program, together with your local CWP Outreach Representative and Benefits Navigator, provides one-on-one expert guidance and support to get your U.S. Department of Labor (DOL) medical benefits white card, and then helps maximize the benefits you receive with that card.

STEP 1: Determining Your Eligibility

You may qualify if you worked as a:

- U.S. DOE employee
- U.S. DOE contractor or subcontractor
- Atomic Weapons Employer (AWE) employee
- Beryllium vendor employee
- Uranium miner, miller, or ore transporter

EEOICPA benefits fall under two sections: Part B and Part E. Some individuals qualify under one part, while others qualify under both.

STEP 2: Filing Your Claim

Once eligibility is determined, we help you file a claim through the U.S. DOL or assist you in selecting an authorized representative, also known as an advocate. Our Benefits Navigators will touch base with you every 30 days during the process to keep you informed and answer any questions you may have about the next steps.

STEP 3: Accessing Your Benefits

When a worker's claim is approved under EEOICPA, the medical costs that are considered common and customary for an approved illness can be 100% covered. You will receive a medical benefits white card from the U.S. DOL; the physician you visit must be enrolled in the program to accept the card and receive reimbursement. You will have no out-of-pocket expenses.

STEP 4: Maximizing Your Support

You may be eligible for additional compensation and increased care through:

- Impairment Evaluations: Up to \$250,000 based on loss of function.
- Consequential Conditions: If your illness led to other health conditions, then those conditions can be covered as well.
- Added Conditions: Add new conditions to your U.S. DOL medical benefits white card as your health changes.

Are you ready to begin your care journey?

Call **877.335.0779**, Monday–Friday, 7:00 a.m.–5:00 p.m. MST.



INTRODUCING OUR BENEFITS NAVIGATORS: Walking with workers through EEOICPA

Navigating your EEOICPA or RECA benefits doesn't have to feel overwhelming.

Whether you're a nuclear weapons or uranium worker trying to understand the U.S. Department of Labor (DOL) EEOICPA application process, the medical benefits available through the program, or the home care options for which you may qualify, you deserve support you can trust. That's where our Cold War Patriots Benefits Navigators come in. Our Benefits Navigators act as your single, trusted point of support — guiding you from start to finish and keeping you informed and educated every step of the way in applying for your U.S. DOL medical benefits white card and maximizing your EEOICPA benefits once you receive it.

LET COLD WAR PATRIOTS DO THE WORK FOR YOU

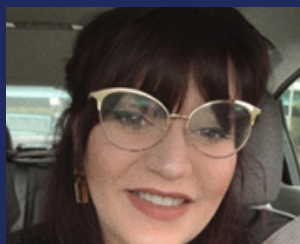
Our Benefits Navigators will connect with you as soon as you start the process of applying for your U.S. DOL medical benefits white card, and will touch base with you every 30 days during the process to keep you informed and answer any questions you may have about the next steps. "As the only organization that actively advocated for workers' rights when EEOICPA was first passed, we have been supporting this community since 2002 and feel a strong sense of loyalty and responsibility toward the workers we serve," says Tim Vargo, who leads the Cold War Patriots Outreach Help Center and manages the Benefits Navigator team. "We've been fighting for workers since the beginning, and we continue to be a 'go-to' resource for their ongoing needs related to home health care and durable medical equipment once their benefits have been approved."

OUR BENEFITS NAVIGATORS THRIVE ON HELPING OTHERS



Jami Bare

"I've been working in the Outreach Help Center for almost 12 years, and nothing matters more to me than getting people the help they need. When workers realize a Benefits Navigator is here to guide them throughout their entire journey, I think they truly appreciate having someone in their corner."



Andrea Smolinsky

"My whole life, I've always strived to help people in one way or another. My main focus is ensuring they receive great care and have a simple, stress-free way to communicate with the U.S. DOL during the filing process. I'm grateful to be a part of the lives of current and former workers."

CREATING RELATIONSHIPS THAT LAST

Our number one priority is to create relationships defined by comfort and continuity with every worker we meet. Instead of feeling like you need multiple sources to help you navigate a complex government program, we want to be your one-stop solution and build trust by offering consistent, knowledgeable guidance.



Are you looking for support you can count on for the long haul?

Call us today at 877.335.0779 to connect with a Benefits Navigator and get started on your EEOICPA journey today.

MEET OUR DEDICATED FAMILY CAREGIVERS



Becky and her Husband Jake

What Being a Family Caregiver Means for My Husband's Care

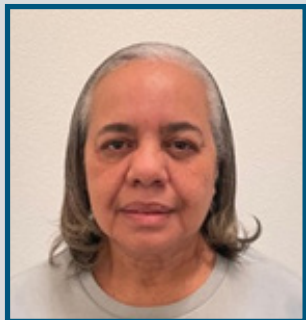
**Becky, Relative Personal Care Attendant
Colorado**

I became a Relative Personal Care Attendant (RPCA) with Professional Case Management (PCM) in 2022, although I had been caring for my husband, a PCM client, long before that. When my case manager asked my husband about the care he was receiving, he described everything I was already doing for him. She then explained that I could be compensated for providing that care, especially since he was on full-time oxygen. We were amazed; before PCM, we had been managing everything on our own without knowing help was available.

I'm with my husband 24/7, so becoming an RPCA has not only made sense for our situation but has also made caring for him easier. I now have more of an understanding of his condition and know what signs to look for when issues arise. And the best part is that I'm getting paid for the care I was already providing. The financial support provided by PCM has certainly lifted a burden. We no longer have to worry about how to cover extra resources, bills, and food on top of his care needs.

Being an RPCA has been incredibly rewarding. I feel seen and supported for the work I do every single day. It gives me peace of mind knowing I can take care of my husband while also being supported for the effort, time, and dedication involved.

Because it has made such a positive difference in our lives, I've been actively encouraging other caregivers and clients to join PCM. The support is real, the work is meaningful, and it truly helps people who are already caring for their loved ones.



Joyce | Relative Personal Care Attendant
Nevada | Tenure: 2+ Years

"PCM supports me with the same care, kindness, and understanding that I strive to give every day. Knowing I am supported allows me to focus on what matters most: truly caring for the people who depend on me."

Wondering how a family member or friend can be compensated for the care they are already providing? Call us today at 877.335.0779 to learn more.

CLIENT CORNER



BERNIE'S CAREER CONCENTRATED ON WORKER CONDITIONS; NOW PCM CATERS TO HIS CARE

My name is Bernard, but my friends call me "Bernie." I have worked all over, but I lived in Uravan, Colorado for years and now reside in Grand Junction, Colorado.

I worked as a manager of employee relations from 1955 to 1986. For 31 years, I addressed problems alongside employees, such as negotiating labor contracts. I would work with the uranium workers during their shifts, including underground and at the mill. If there were any issues with the uranium workers, miners, or the mills, I would travel there to resolve them.

For a decade, I lived in Uravan, Colorado, and observed working conditions in more than 20 uranium mines. After moving to Grand Junction, Colorado, I continued to travel across Colorado, Wyoming, and Utah for work. I also collaborated with geologists and visited Texas, New Mexico, and Canada. I believe our work was instrumental in meeting the requirements during the Cold War period.

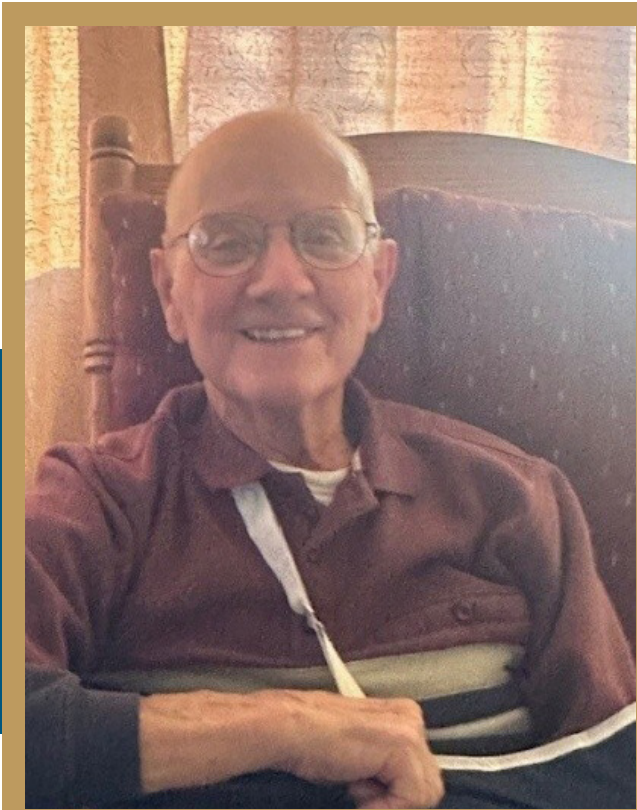
I became a Professional Case Management (PCM) client in June 2024. I found out about PCM through Cold War Patriots and attended their local events for years. PCM has helped me with my doctors, navigating medical tests and results, and Impairment evaluations.

I would recommend PCM to a friend. I appreciate their approach and the attitude of everyone. They have done a fantastic job!



Scan the QR code or visit procasemanagement.com/pcm-client-corner to read more from CWP members who are also PCM clients on our Client Corner page.

If you're curious about how PCM care can help keep you comfortable at home call the **Outreach Help Center** at **877.335.0779**.



Bernie



Outreach Spotlight



SHARON JOHNSON

★ Nevada

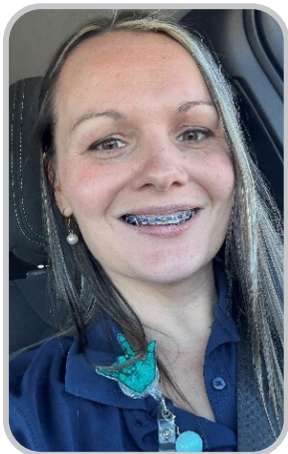
★ Sharon.Johnson2@procase.com

I joined Professional Case Management (PCM) in January 2026, bringing more than two decades of experience in senior services, including leadership roles in assisted living and home care organizations. Throughout my career, I have worked closely with older adults and their families, guiding them through complex care decisions while prioritizing safety, dignity, and continuity of support.

I was raised in a family dedicated to military service, which instilled in me a deep respect for service members and a strong sense of responsibility. Over the years, I have personally navigated complex benefit systems, and I understand the persistence, organization, and advocacy required to secure resources that have been earned. That experience strengthened my commitment to serving individuals who have sacrificed for our country.

At PCM, I am honored to support former nuclear weapons and uranium workers in accessing the compensation and healthcare benefits available to them. I find genuine fulfillment in helping them obtain the medical support and financial resources necessary to live comfortably and fully. My approach combines strategic problem-solving, detailed coordination, and clear communication to ensure each former worker receives attentive, personalized support throughout the benefits process.

PCM Clinical Spotlight



DESTINY PAUL, RN

★ Tennessee

★ Destiny.Paul@procase.com

I have been a registered nurse for nine years, with most of my experience in dialysis and medical-surgical nursing. I've spent the last six years with Professional Case Management (PCM), where I currently serve as the Nurse Navigator for Tennessee. In this role, I support new clients through every step of the home care admission process and participate in local Cold War Patriots events, educating prospective clients and their families about the EEOICPA program. I also attend multiple PCM Share the Care events to further support outreach and awareness, as the program's mission is to connect eligible nuclear weapons and uranium workers with needed home care.

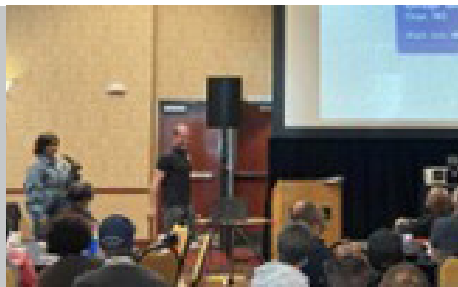
Previously, I worked as a home-based case manager and later as a senior case manager, mentoring new clinical team members on U.S. Department of Labor processes. Throughout my time here, I've had the privilege of meeting many former and current workers, and I've truly enjoyed helping them navigate the program.

I believe deeply in the impact of this work, and I'm grateful for the opportunity to continue making a positive difference in the lives of nuclear weapons and uranium workers and their families.

Cold War Patriots Events

Thank You for an Amazing Year So Far!

We encourage all Cold War Patriots (CWP) members, especially first-time attendees and Professional Case Management clients, to join us! It's a great opportunity to connect with fellow workers and learn about the benefits available to you. Pick up some CWP swag at the events too, including CWP member shirts, blankets, koozies, keychains, commemorative coins, and so much more!



Historic Plant Photos Spark Memories at Missouri Gathering



Workers Share Their Stories and Experiences at Lunch & Learn Events



Dr. Donald Lakatos of PCM Impairments Emphasizes the Importance of Impairment Evaluations

Nevada Test Site Reunion, Las Vegas, Nevada



Workers Enjoyed a Live Band, Bingo, and Visiting with Local Exhibitors



Lucky Winners During the Raffle!



Honoring the Nevada Nuclear Weapons Workers

Uranium & Nuclear Weapons Workers Reunion, Western Slope, Colorado



Longest Tenure Honored: Tom's 50+ Years of Service



Spring Reunion in Grand Junction Welcomes Over 50 Workers and Families



Lots of Laughs and Friendly Competition at Bingo

For Upcoming Date, Time, & Event Locations

Visit the Cold War Patriots Events website by scanning the QR code or call 877.335.0779. Be sure to also check your email and mailbox for official invitations throughout the year.



coldwarpatriots.org/CWPEvents



IMPAIRMENTS CORNER

All Under One Roof

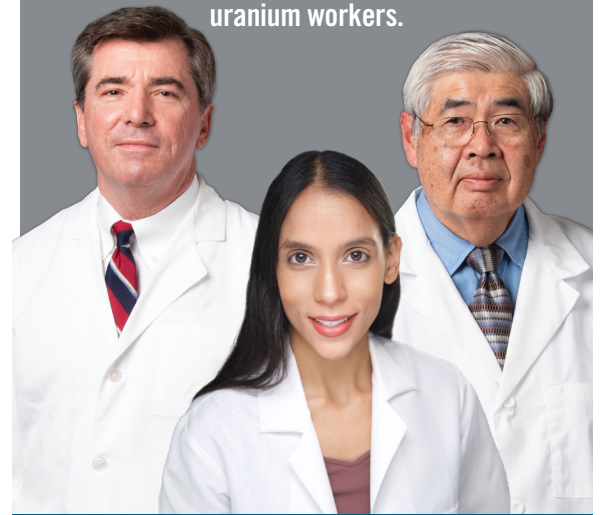
PCM Impairments is the premier provider for Impairment Evaluations. Our three physicians have decades of combined experience, and most evaluations are completed by phone in the comfort of your own home. But there is something else that makes us the best choice for you. Everything you need related to your health is under one roof!

- **Need assistance understanding your EEOICPA benefits and how to use them?** We can help. If you haven't yet submitted a claim for benefits, our Cold War Patriots Benefits Navigators are a trusted, single point of contact who will support you from start to finish and keep you informed throughout your benefits application journey. We'll also assist in scheduling your Impairment Evaluation when the time comes.
- **If you already have your U.S. DOL medical benefits white card,** our Outreach Help Center and our knowledgeable PCM Impairments team will walk you through next steps to maximize your rating, so you receive the full compensation you deserve.
- **Need a little help at home?** We do that too! Professional Case Management (PCM) provides high-quality home care services you can trust, and we can also compensate your family members who may be assisting with your care. Here's a bonus of working with us: when you receive home care services from PCM, your case manager partners closely with our Impairment Team members to provide the simplest process AND most accurate Impairment rating.

Ready for your Impairment Evaluation? Our knowledgeable team will assist you with everything you need for the best experience AND maximum benefits, based on the rating assigned by our doctors. Don't let EEOICPA confusion get in the way of accessing all the benefits you have earned. Give us a call to discuss your needs with a helpful representative today.

MEET THE DOCTORS

Donald Lakatosh, M.D., Randy Soo Hoo, M.D., and Zaira Chaudhry, M.D. are certified by the American Board of Independent Medical Examiners (ABIME), the premier certifying body for impairment evaluators. Combined, they have more than 40 years of experience providing impairment evaluations to nuclear weapons and uranium workers.



US Department of Labor
Office of Workers' Compensation Programs
Division of Energy Employees Occupational Illness Compensation



Medical Benefits Identification Card

Claimant Name: JOHN Q. PATRIOT
Case Number: 12345
RxBin: 610084
RxPCN: DRWDPROD
RxGrp: OWCP1222

No Co-Pay/No Deductible

MISUSE OF CARD IS PUNISHABLE BY LAW

We are certain you will have a great experience with PCM Impairments.

Let us get you on the right track today!

Call us at 866.578.2580 to speak with a PCM Impairment Navigator.